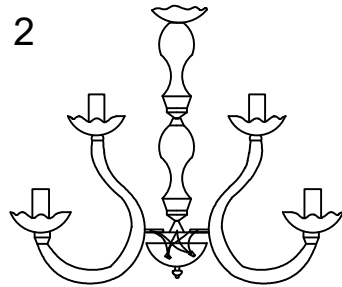
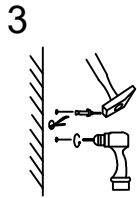


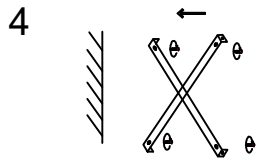
1  
The lamp arm is connected to the center post by screws



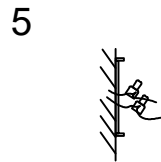
2  
The lamp arm wire is connected to the main line (Lines of the same color are joined together)



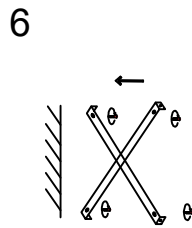
3  
Drill holes in the wall and insert expansion screws



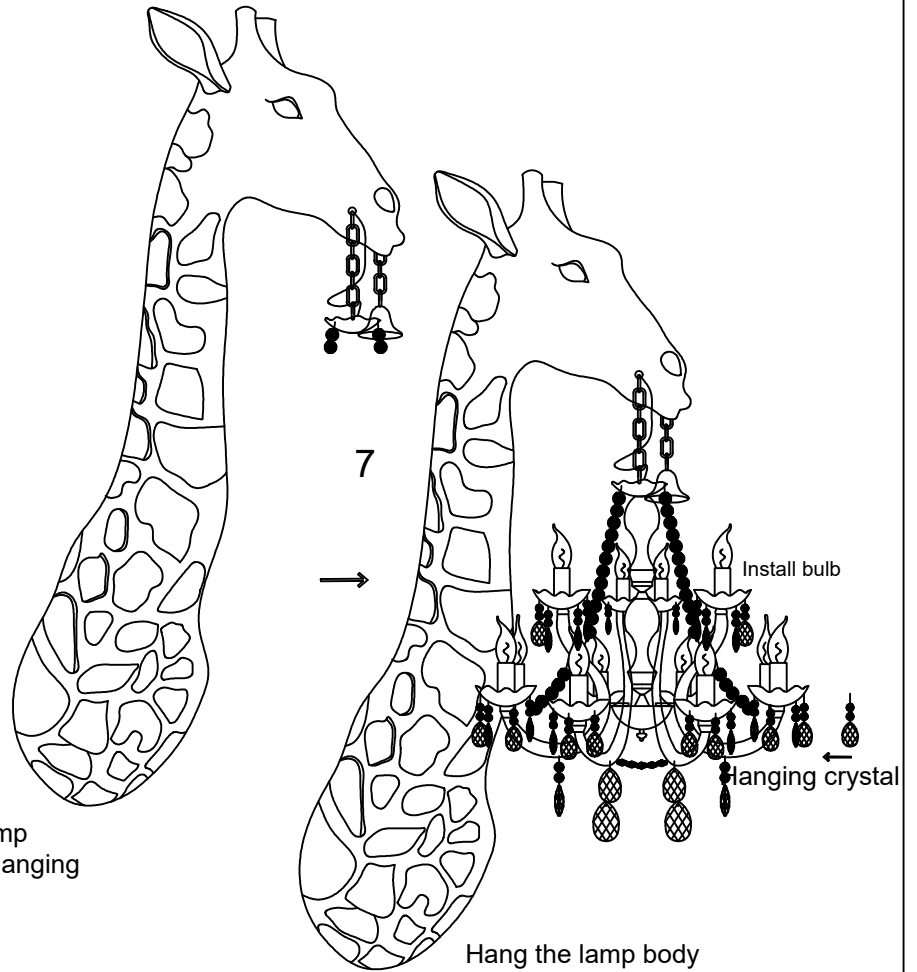
4  
Install the hanging plate on the wall



5  
The electric wires in the home connect to the light fixtures



6  
Install the lamp body on the hanging plate



7  
Hang the lamp body on the deer's head

Note: Please turn off the power before installing the lamp