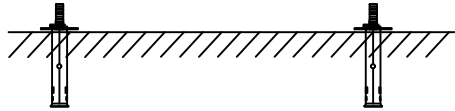


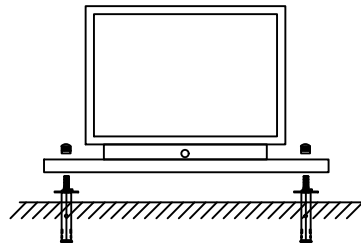
About installation

Various installation methods, installation can still be done if the wall is uneven

1 Drill and securely install

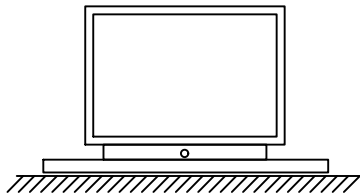


First, install the expansion bolts onto the corresponding positions on the pillar.

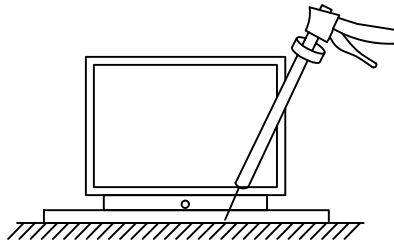


When installing, align the switch head in an easily accessible direction and then tighten the flower nut screw.

2 The glass is fixed in place using silicone sealant.



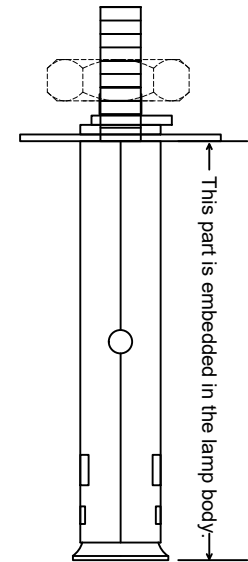
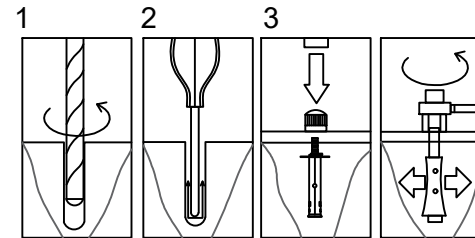
Place the lamp in the desired location.



Apply silicone sealant to the base edge to secure it in place.

Garden light installation instructions

- 1 When installing, align the switch head in an easily accessible direction and then tighten the flower nut screw
- 2 Place the lamp in the desired location
- 3 Apply silicone sealant to the base edge to secure it in place.



1. Open the package and confirm the integrity of the lamps and accessories;
 2. Take out the lamp and test whether the function of the lamp is normal (Power on to test whether the LED bulb lights up before installation);
 3. According to the installation video provided by customer service, install the lamp to the location where it needs to be used:
- Mains models require the installation of specified bulbs:

Things to note:

1. Place the lamp in the appropriate position
2. Apply glass glue to the edge of the base.

If you use glass glue for installation, leave about 2cm of the edge without glue when applying glue on the edge.

Ensure air circulation between the inside of the lamp body and the outside world. Make sure that the water that seeps in from the bottom on long-term rainy days can discharge. If you install it with screws, you can ignore it.

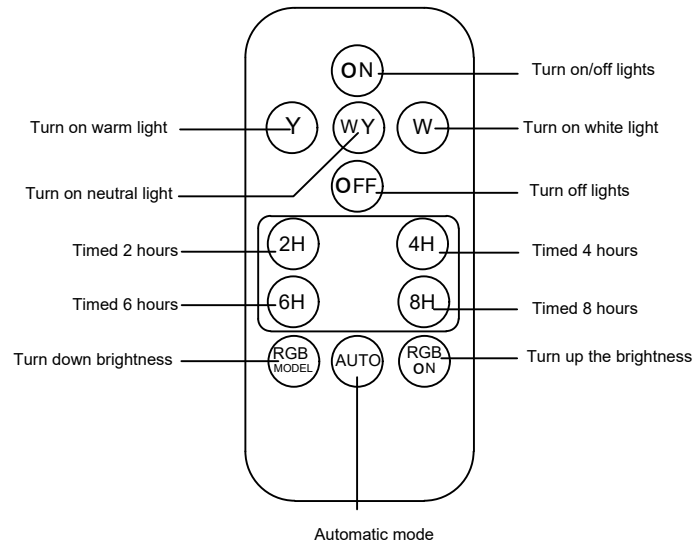
Garden light installation instructions

1. Open the package and confirm the integrity of the lamps and accessories;
2. Take out the lamps and test whether the functions of the lamps are normal (solar models need to prepare items to cover the solar panels before testing);
3. According to the installation video provided by customer service, install the lamps to the required location; the mains model needs to install the specified type of bulb;
4. For first time use, you need to use the remote control to turn on the lamp, and press the AUTO button to set it to automatic mode:

Things to note:

1. It is recommended that the solar model be installed immediately after receiving the goods to avoid being unable to turn on the light due to over-discharge of the battery due to long storage time;
2. It is recommended to install it in the morning, as the solar panel can replenish the battery power and ensure the lighting effect;
3. When installing the solar model, you need to make sure that there is no obstruction above the lamp to avoid insufficient charging due to obstruction, resulting in the light not turning on;
4. When installing the solar model, you need to ensure that there is no light above the lamp at night. Bright light at night will be misjudged to mean that it is charging during the day and does not light up. Lights:
5. It is recommended to clean the solar photovoltaic panels once a month to prevent the dirt on the photovoltaic panels from affecting the charging efficiency and causing the lights to not turn on;
6. In the case of continuous rainy days, the lighting effect is not good, it is recommended to use the remote control to turn off the lights for two nights. , the lighting effect will be restored after the battery is fully charged:
7. When you find that the lighting effect of the lamp is not good, please refer to the above items to check the cause and eliminate it, use the remote control to turn off the light - it will take two nights to restore the lighting effect;

Remote Control



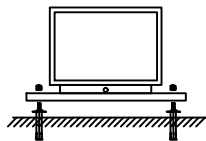
About installation

Various installation methods, installation can still be done if the wall is uneven

① Drill and securely install

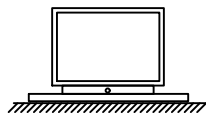


First, install the expansion bolts onto the corresponding positions on the pillar.



When installing, align the switch head in an easily accessible direction and then tighten the flower nut screw.

② The glass is fixed in place using silicone sealant.



Place the lamp in the desired location.



Apply silicone sealant to the base edge to secure it in place.