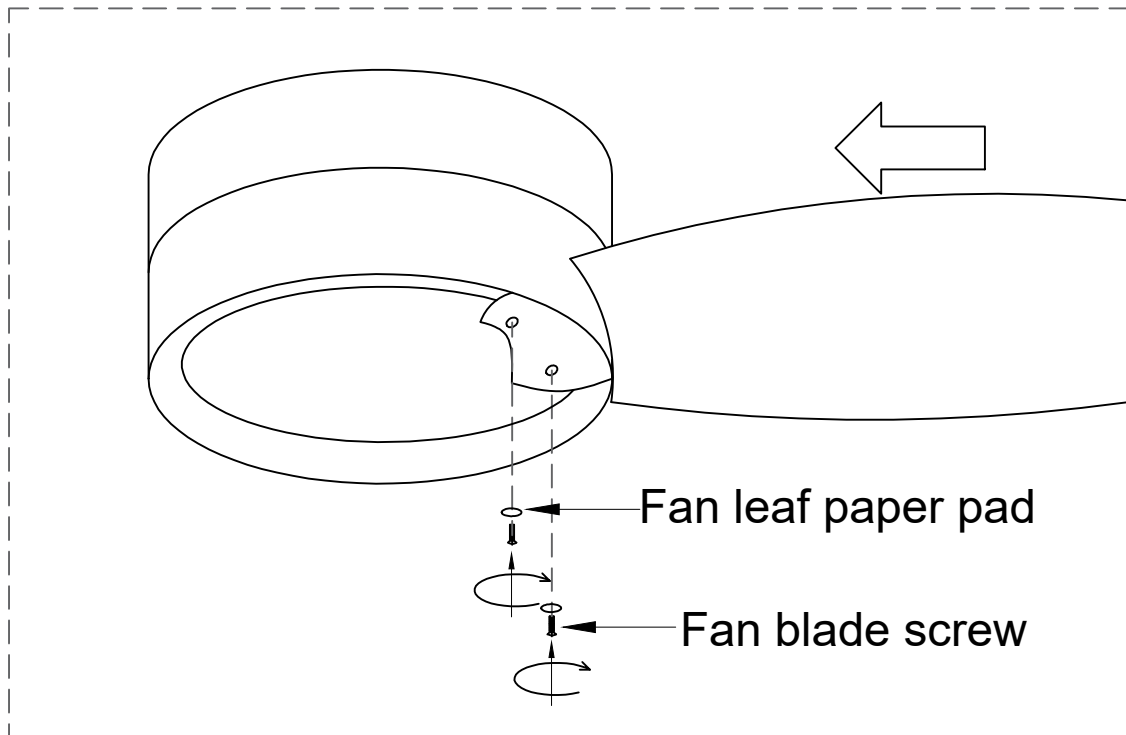


# 1



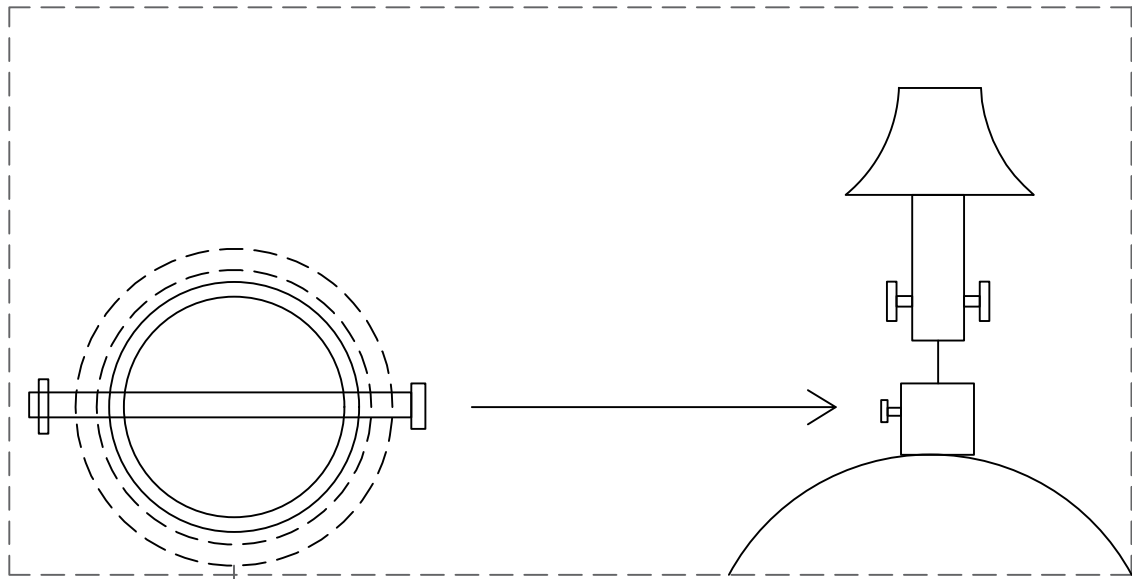
Install the fan blade installation hole towards the main unit, and use a screwdriver to install the fan blade screws and fan blade paper pads.

First, pass the power cord through the lower decorative cup/hanging weight/hanging rod in order.

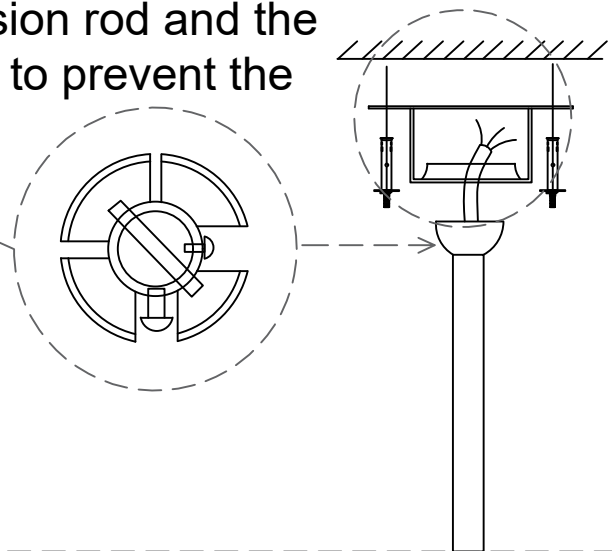
Combine the suspension rod and the motor connector. Pass the cross pin through the connector hole and the suspension rod hole in turn and lock them with the R pin. Then tighten the suspension rod screws at both ends and lower the lower decorative cup to cover the connector.

Put the hanging ball into the opening position, turn and adjust the hanging rod so that the groove on the hanging ball and the lug on the hanger are combined.

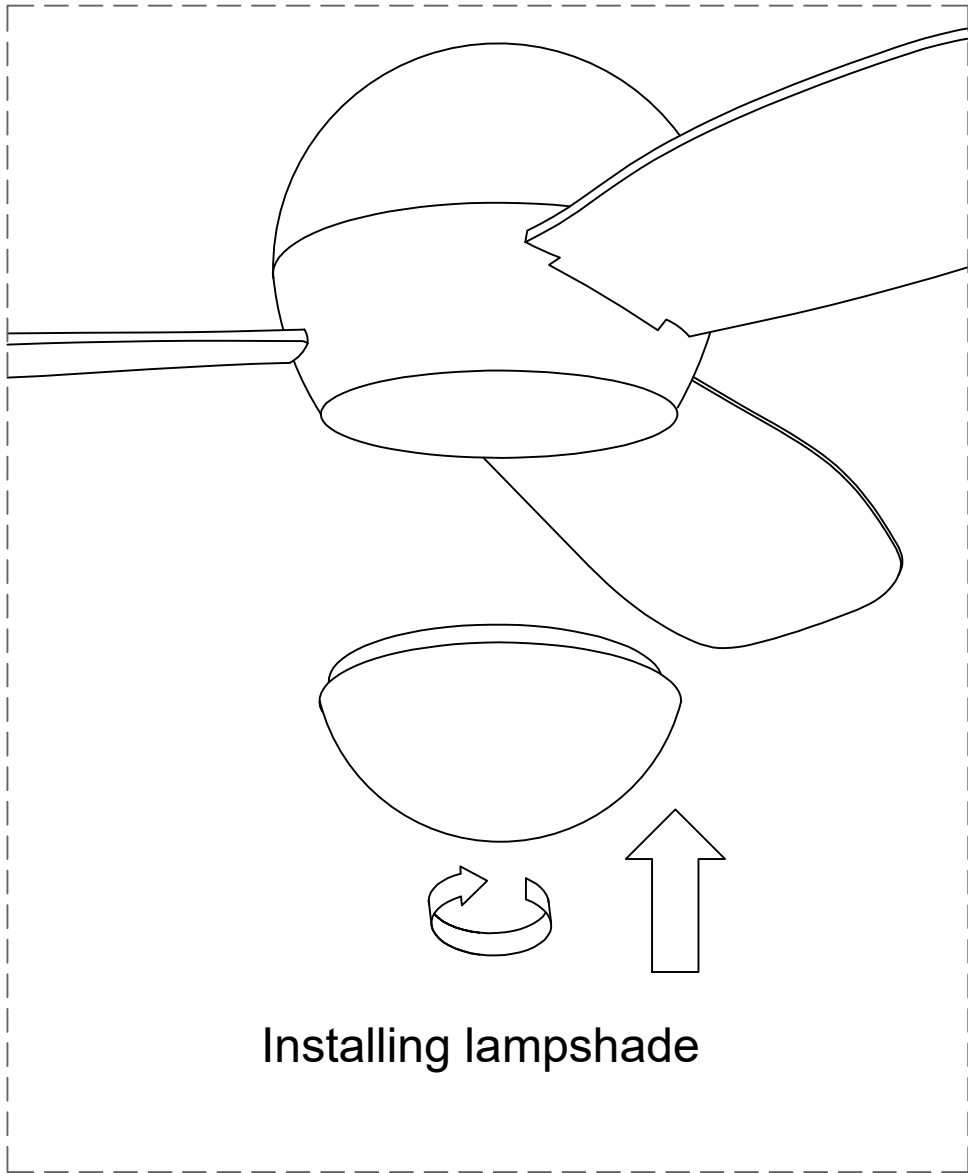
# 2



Note: Please check whether the screws are tightened, the suspension rod and the latch are properly inserted to prevent the whole from shaking.



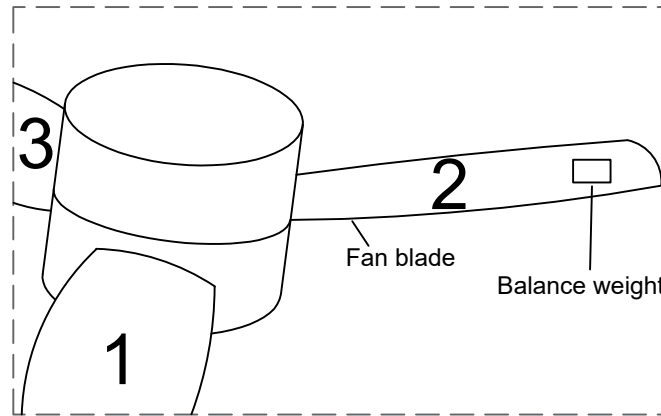
3



Installing lampshade

# 4

After the fan light is installed, after eliminating various human factors, if the ceiling fan still shakes, you can adjust the balance of the ceiling fan according to the following methods.



## Method 1

Adjust the ceiling fan 1/2/3 and then fix it

## Method 2

- ① Adjust the ceiling fan to the highest speed to make it produce the greatest vibration, observe the fan swing, then turn off the ceiling fan, select one of the blades and clamp the balance frame to the end of the blade.
- ② Turn on the ceiling fan switch to see if its oscillation improves, then turn off the fan, clamp the balance clip to the other fan blade, and test repeatedly to find the blade that improves the best
- ③ Place the balance clip on the fan blade that will provide the greatest improvement. Move the balance clip inward or outward on the edge of the blade to find the position that provides the greatest improvement.
- ④ Remove the balance frame and attach the balance block, and put it into the center line on the blade, which is the position where the balance clamp was just placed