

# IMPORTANT SAFETY INSTRUCTIONS

INSTALLATION BY A LICENSED ELECTRICIAN IS STRONGLY

**Note:** Turn off the power to the main circuit panel before starting.



## STRUCTURAL SUPPORT REQUIREMENT

Ensure the junction box or mounting surface is independent of the drywall and rated for heavy-duty fixtures.

Secure the mounting bracket directly to a ceiling joist or a structural support member capable of supporting at least 2x the fixture weight.



## WARNINGS

When unpacking, be careful not to pull wires, as a bad connection may result. Do not connect electricity until your fixture is fully assembled. To reduce the risk of fire, electrical shock, or personal injury, always turn off fixture and allow it to cool prior to replacing the lightbulb. Do not touch or look directly at the bulb when fixture is illuminated. Keep flammable materials away from lit bulb.



## WARNINGS

Choking hazard. Keep the power cord at least 3 feet away from cribs, bassinets, and toddler beds.



## WIRING SAFETY NOTES

When connecting wires, please follow the standard color coding: black to black (live), white to white (neutral), and green/bare copper wire to ground.

## RECOMMENDED

Please refer to the rated power at the lamp head, and do not exceed the recommended wattage to avoid fire hazards. When checking the circuit connections, the curtains need to be removed



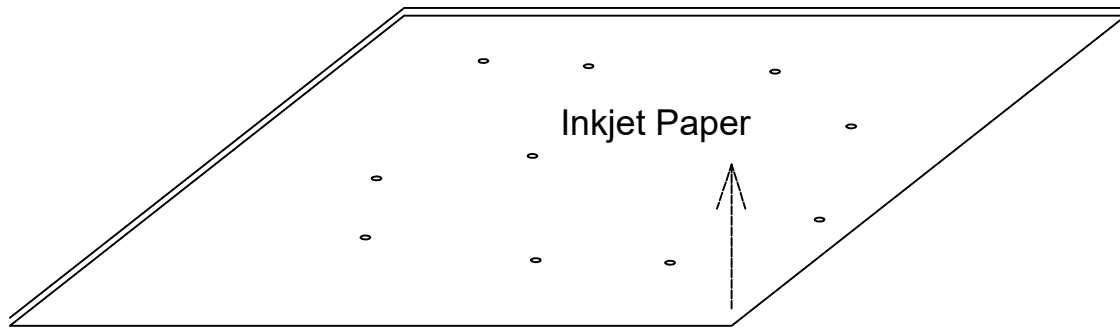
## CARE AND MAINTENANCE

Handle with Care: Please exercise caution during assembly and cleaning to avoid scratches or breakage.

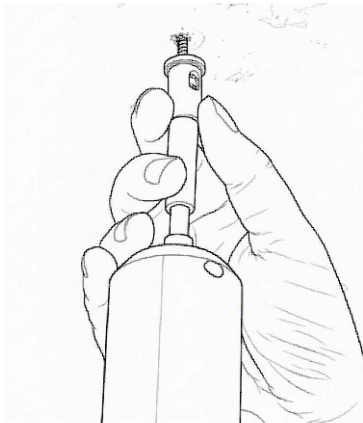
Cleaning Instructions: Do not use any chemical solvents or abrasive cleaners on the lampshade, as they may damage the finish. Use only a soft, dry cloth to remove dust.

1

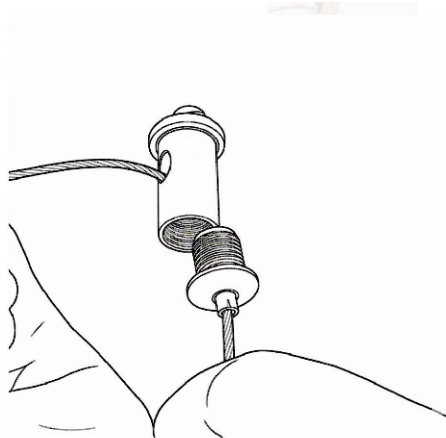
First, turn off the power. Connect the positive and negative terminals of the wires to the corresponding positive and negative terminals of the power supply, then turn on the power to test if it lights up.



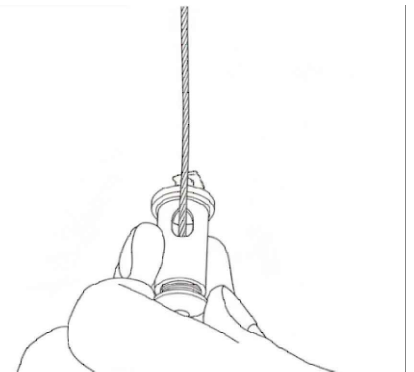
Included here is a printed layout sheet marked with specific point locations; please affix this sheet to the ceiling.



The small ceiling cover is first screwed to the ceiling



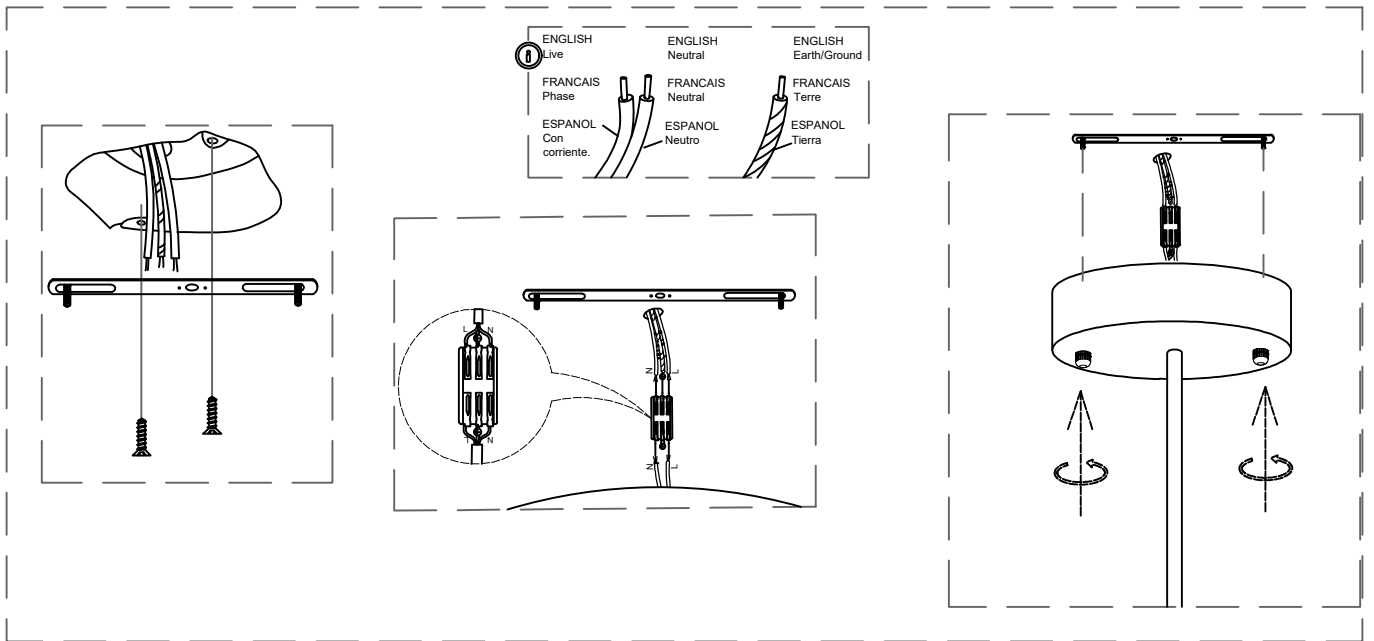
The wire hanging wire on the lamp body is inserted into the small ceiling cover and then passed through the side holes



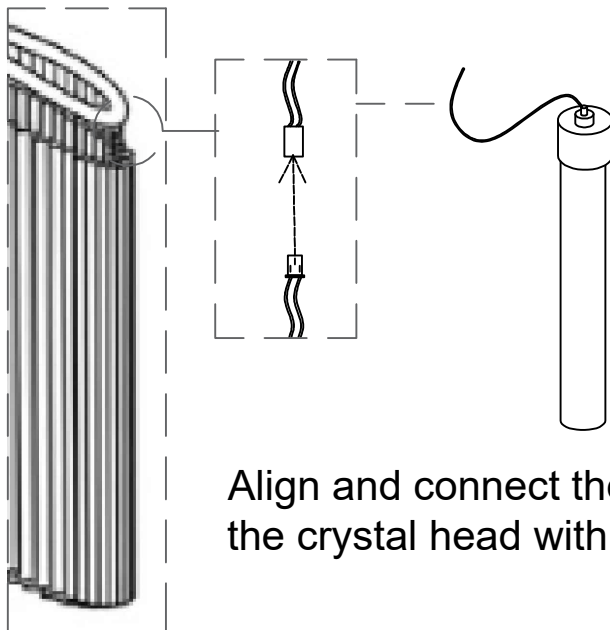
Tighten and fix

Note: The length of the wire rope can be adjusted by pressing the lower end of the tension head

2



The light fixture is equipped with a ceiling box designed to align with the junction box in the ceiling. First, install the mounting plate; then, connect the fixture's wires to the ceiling's wiring; finally, secure the fixture in place using the manual nuts.



Align and connect the male and female prongs on the crystal head with those on the light stand.