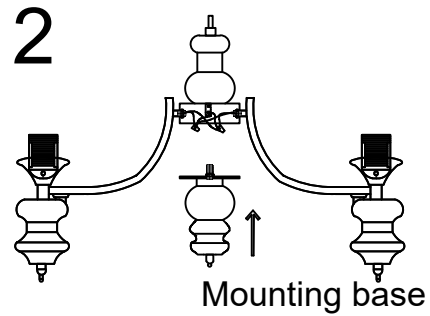
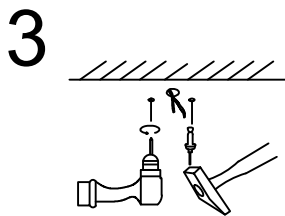


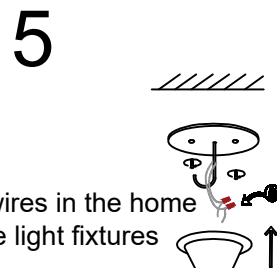
The lamp arm is connected to the center post by screws



The lamp arm wire is connected to the main line (Lines of the same color are joined together)

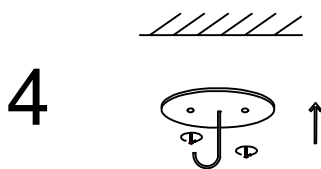


Drill holes in the ceiling and insert expansion screws

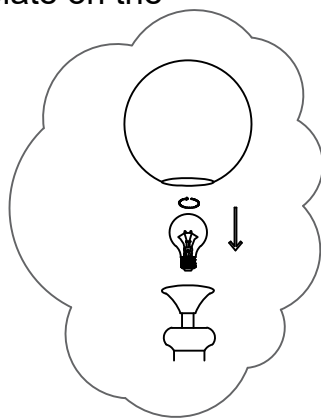


The electric wires in the home connect to the light fixtures

Install the lamp body on the hanging plate

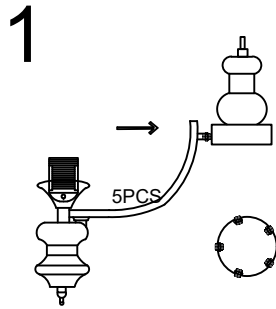


Install the hanging plate on the ceiling

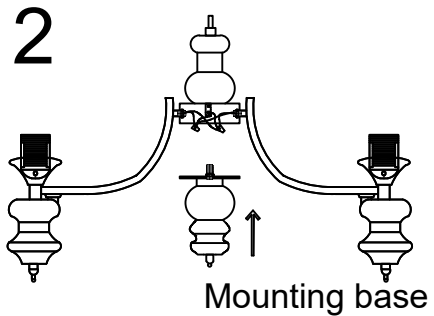


Install bulbs and lampshades

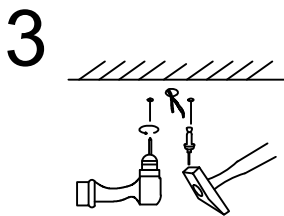
Note: Please turn off the power before installing the lamp



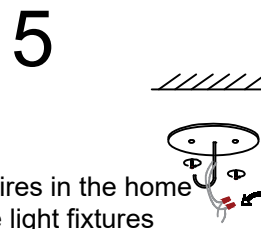
The lamp arm is connected to the center post by screws



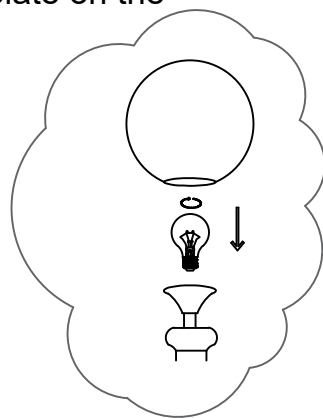
The lamp wire is connected to the main line (Lines of the same color are joined together)



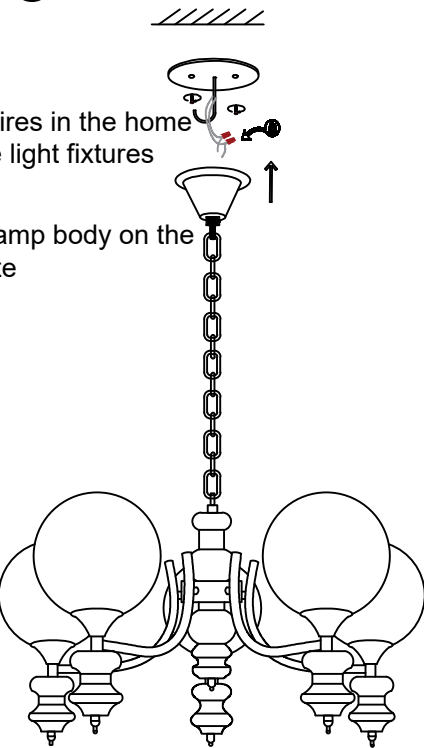
Drill holes in the ceiling and insert expansion screws



Install the hanging plate on the ceiling



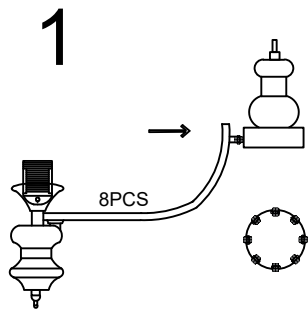
Install bulbs and lampshades



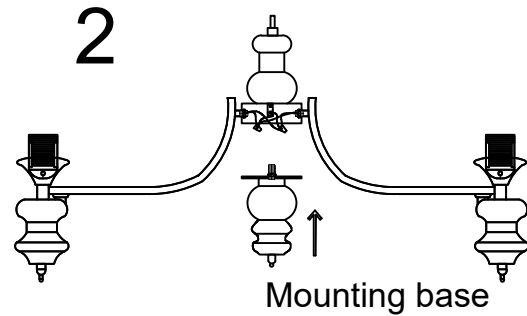
The electric wires in the home connect to the light fixtures

Install the lamp body on the hanging plate

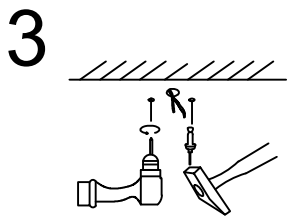
Note: Please turn off the power before installing the lamp



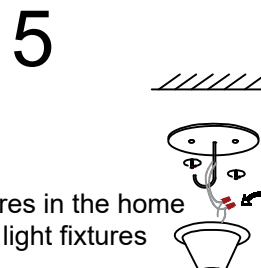
The lamp arm is connected to the center post by screws



The lamp wire is connected to the main line (Lines of the same color are joined together)

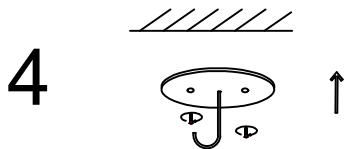


Drill holes in the ceiling and insert expansion screws

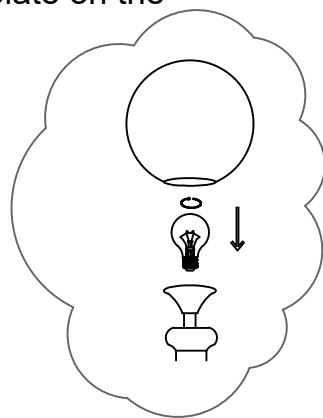


The electric wires in the home connect to the light fixtures

Install the lamp body on the hanging plate



Install the hanging plate on the ceiling



Install bulbs and lampshades

Note: Please turn off the power before installing the lamp