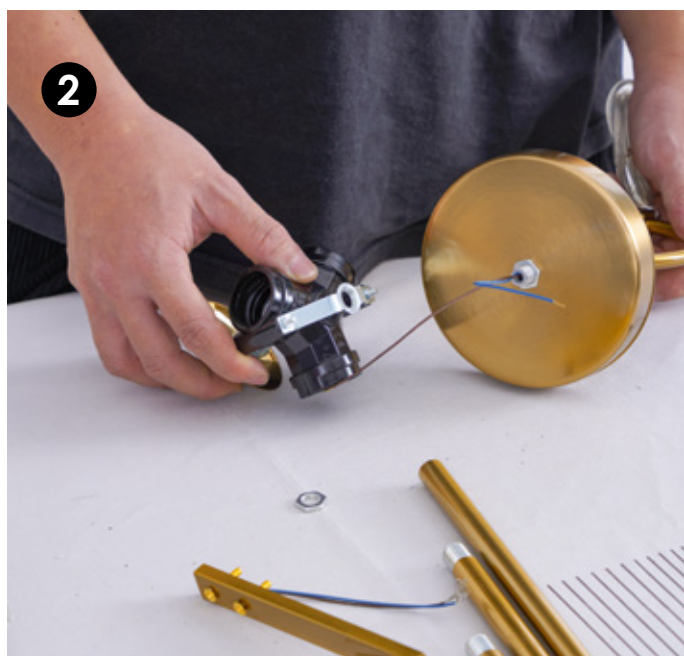


# Product installation steps



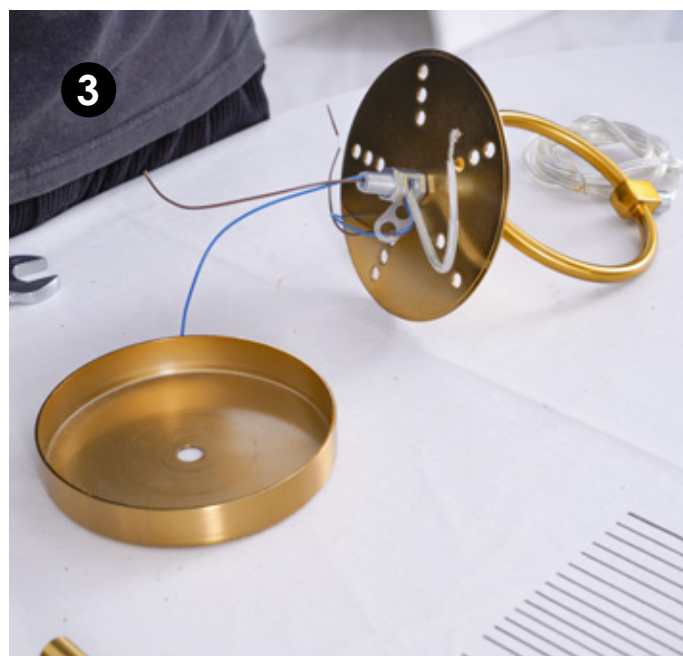
1

**TAKE OUT ALL ACCESSORIES**



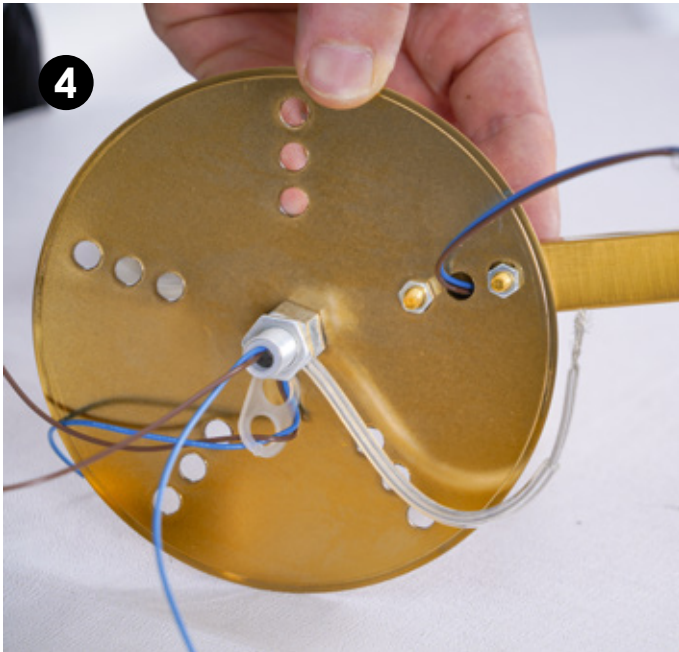
2

**Remove the lamp cap and nut**

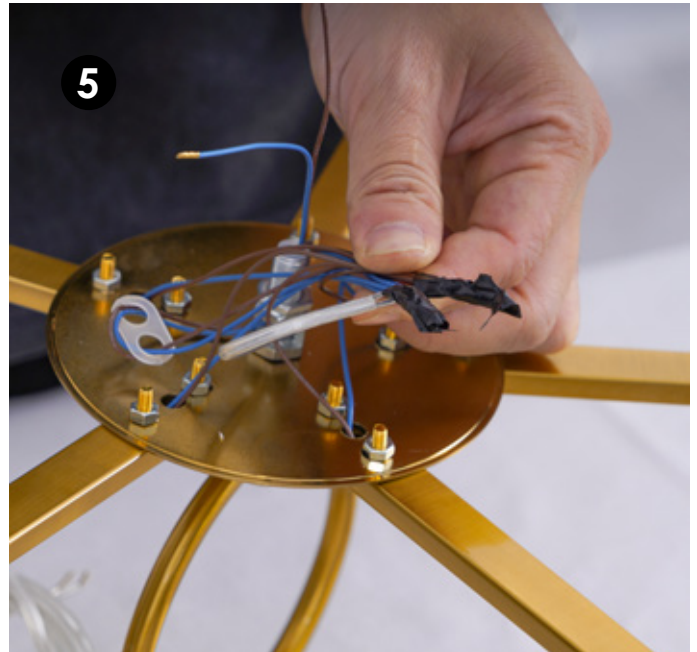


3

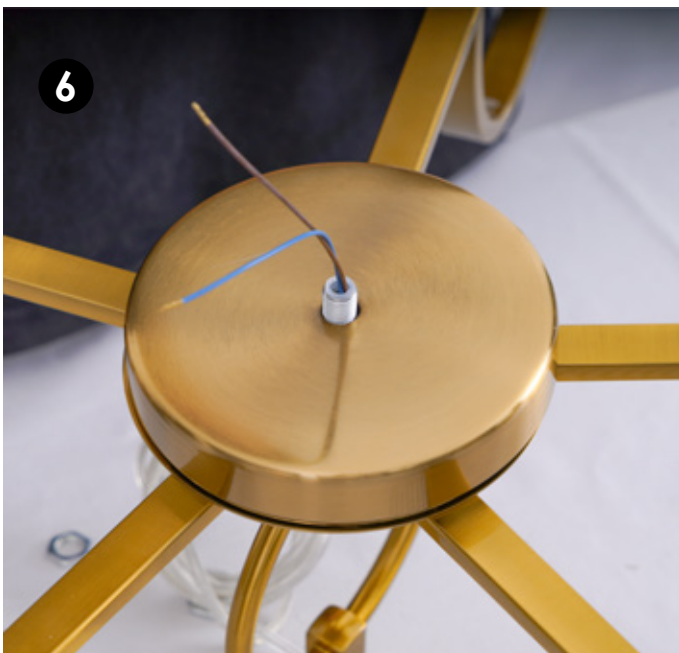
**Remove the bottom cover**



**4**  
Fix the lamp arm with screws  
and pass the wire along the hole



**5**  
Tie wires of the same color  
together with wire caps or tape



**6**  
Fix the bottom cover of the lamp

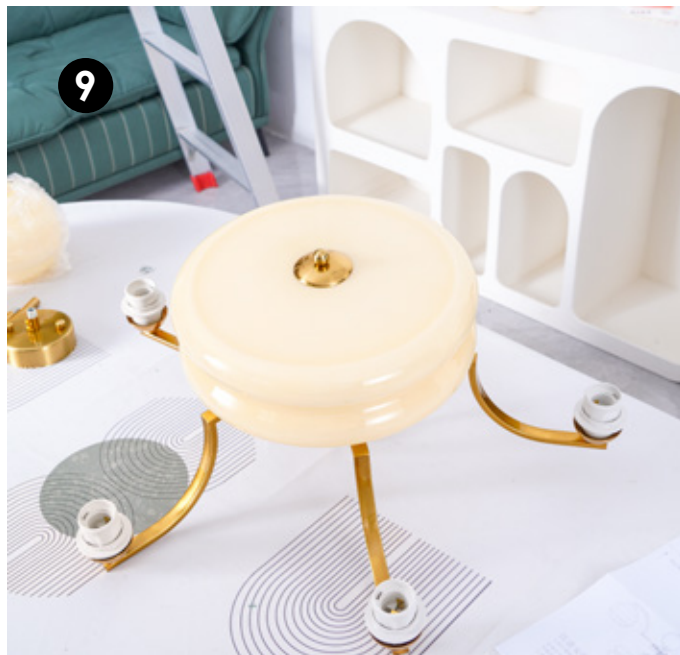


**7**  
Rotate and fix the lamp head and base,  
and connect the wires with the connector



8

Install the light bulb



9

Fix the glass lampshade with nuts



10

Put on the glass lampshade



11

Installed and fixed to the ceiling