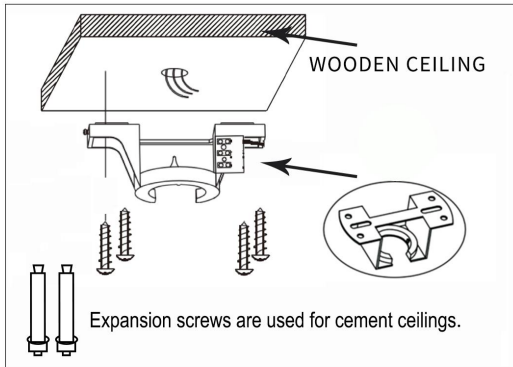
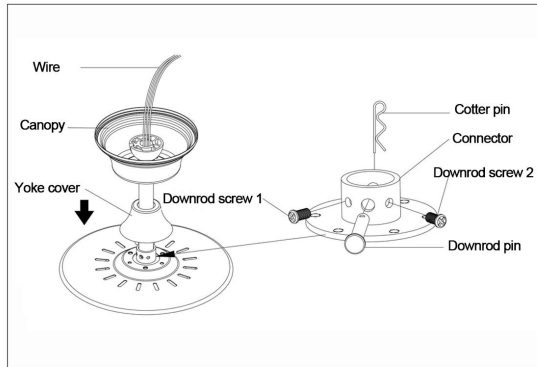


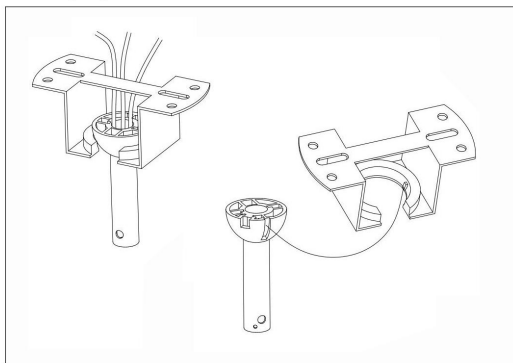
1. Hanger bracket installation.



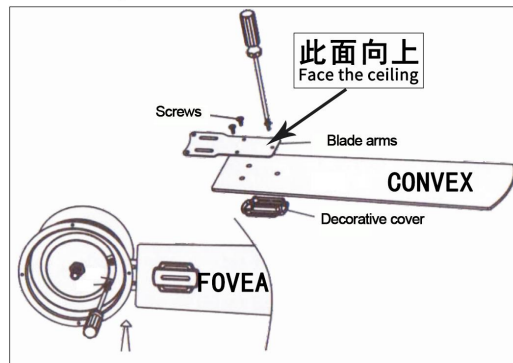
2. Installing drop rod and canopy.



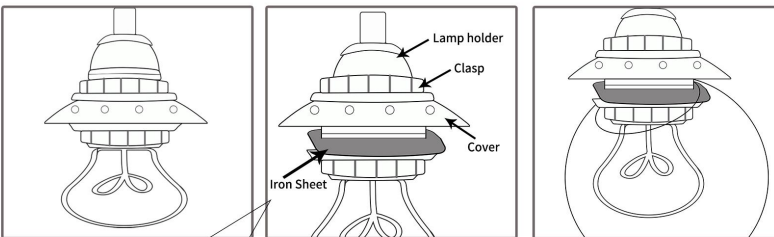
3. Hanging fan to bracket.



4. Attaching the blades.

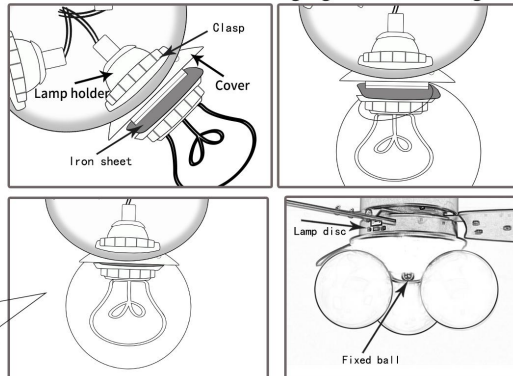


5. Installing light kit. (five lights)



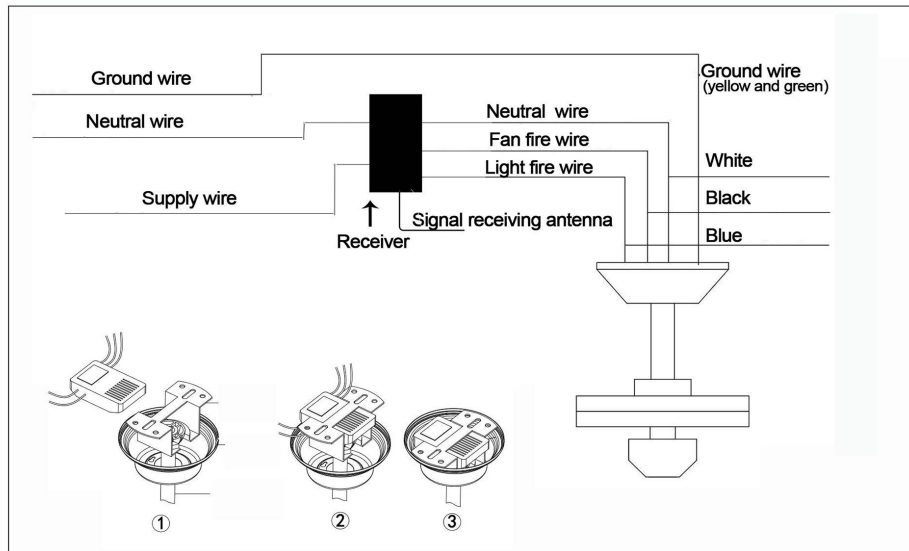
A. Install five light bulbs.  
 B. Unscrew the clasp. Open the first lampshade cover.  
 C. Exposing the second layer of Iron Sheet.  
 Angle the lampshade against the sheet iron so that the sheet iron is placed in the lampshade. Cover the first lampshade cover.

6. Installing light kit. (three lights)

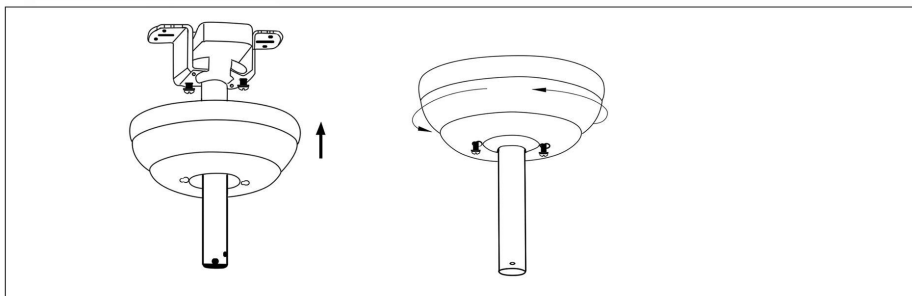


A. Install the three lampshades according to steps a-c of five lamps, place the lamp on the lamp disc, and tighten the fixed ball over.

7. Installing light kit.(five lights)

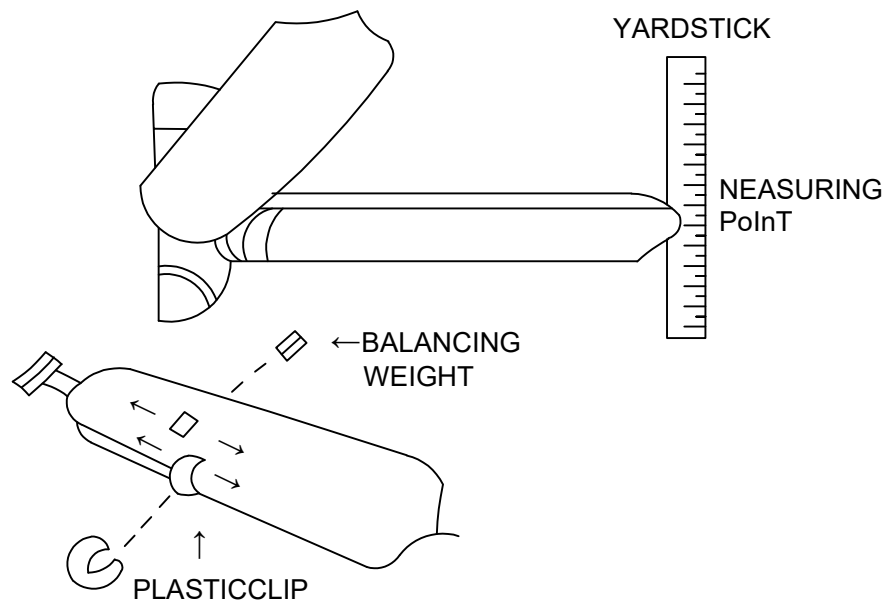


8. Fixed the canopy.



First loosen the two diagonal screws on the mounting bracket. Align the screws with the holes of the ceiling canopy and pass through the holes. Then rotate the ceiling canopy until it snaps, and tighten the screws.

# DYNAMIC BLADE BALANCING KIT



## PREFACE

Your ceiling fan may sometimes have wobble problem when operate due to irregularity in blades or the blade holders. Also improper assembly in the mounting system may cause some additional problem, also bearings crooked. The following procedure to remedy such problem is strongly recommended by us from our past experience in handling the wobble problem:

## DYNAMIC BLADE BALANCING KIT FOR CEILING FANS

1. Make certain that all blades are firmly screwed into the bladeholder
2. Make sure that all blades are firmly secured to the flywheel and check pitch of blade holders, all must be the same.

3. By looking up at the fan from below check and be certain that none of the blade holders are bent so that none of the blades are out of position. A correction can be made by very gently bending the blade holder back into position.
4. By the simple use of a household yardstick blade tracking can be checked, put the yardstick up against the ceiling vertically and even with the outside leading edge of a blade. Note the distance of the edge of the blade to the ceiling, carefully turn the blades slowly by hand to check the remaining blades. If blade is not in alignment the blade holder may be gently bent up or down to be in line with the other blades.

If by following all the steps and the wobble problem is not solved a dynamic balancing needs to be done by the use of the balancing Kit. Follow the procedure listed below:

- \* Turn the fan on and adjust the speed control (usually high speed) setting to the speed which creates the greatest wobble
- \* Turn the fan off. Select one blade and place the balance clip on it, halfway between the blade holder and the blade tip or the rear edge of the blade.
- \* Turn the fan on. Watch to see if the wobble is improved or worsened. Turn the fan off again and move the clip to another blade and test again. Repeat this process with all blades and then note the blade which is the most improved.
- \* Move the clip back to the blade which showed the most improvement. Move the clip inward and outward on this blade and operate the fan to find the position where the clip gives the most improvement.
- \* Next remove the clip and install a balancing weight to the top of the blade along the centerline near the point where the clip was positioned. Use a sharp Knife or razor to separate the weights.

Caution: Stay clear of the blades. If the clip, for any reason, is not secure, injury could result Dangerous!