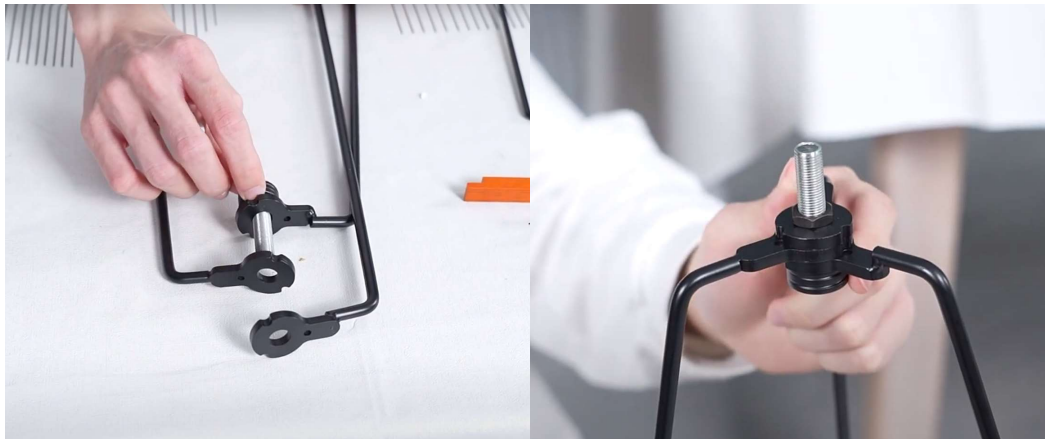




Accessories display



1. Assemble the triangular bracket



2. Fix the lampshade and bracket



3. Connect the lamp head wires and install the light bulb



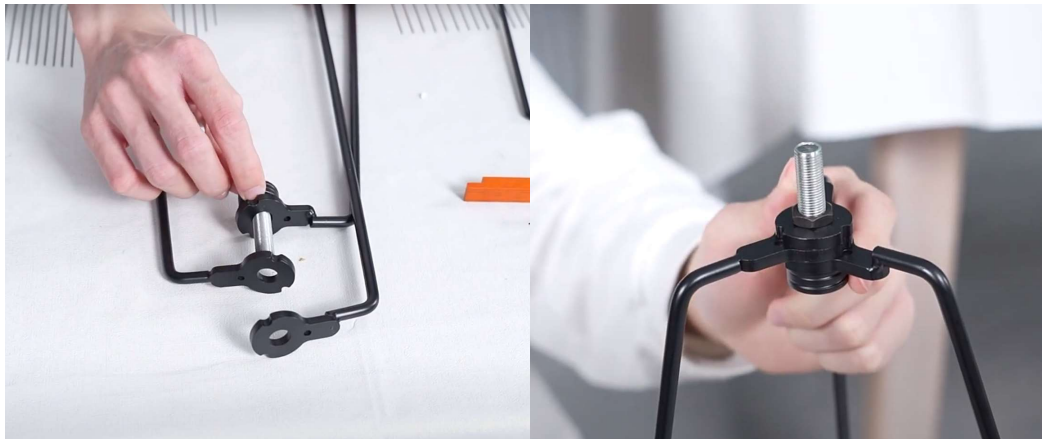
4. Pull up the lampshade and secure it



5. installation is complete



Accessories display



1. Assemble the triangular bracket



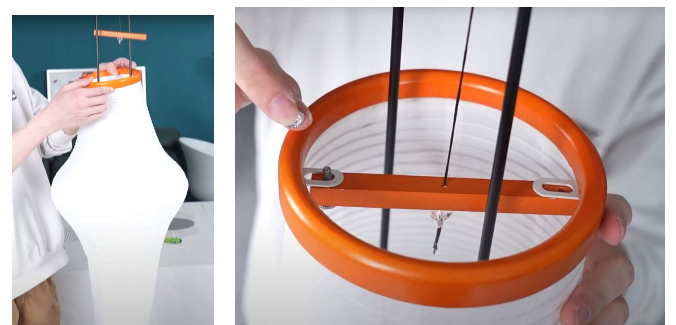
2. The power cord passes through the lampshade and is fixed



3. Install the circular tube and bracket in sequence



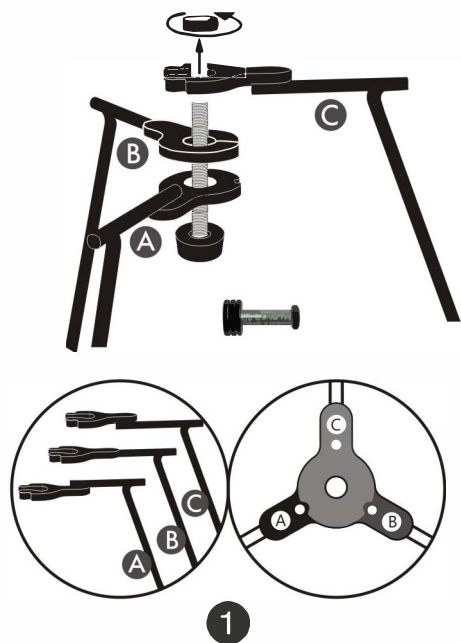
4. Connect the lamp head wires and install the light bulb



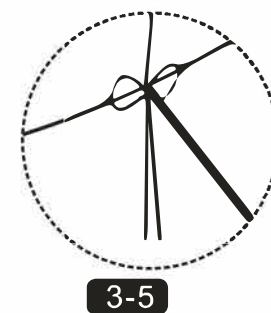
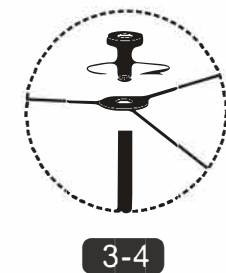
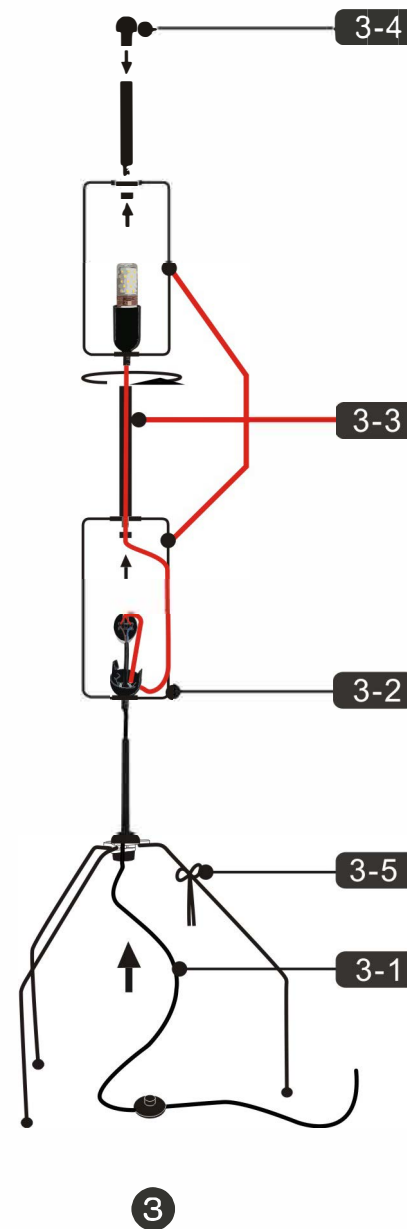
5. Pull up the lampshade and secure it with screws

INSTALLATION STEPS

- (A) Assemble the lamp body support.
- (B) Connect the wire with the lamp cap.
- (C) Place the lamp cover on the lamp body support and fix it.
- (D) Tie the rope on the leg to fix it.



Rice Paper Floor Lamp-D18.5"



Installation schematic