

1:Installing light arm

2:The power cord of the lamp arm is connected to the main line, L/N

3:Assembly of lamp body

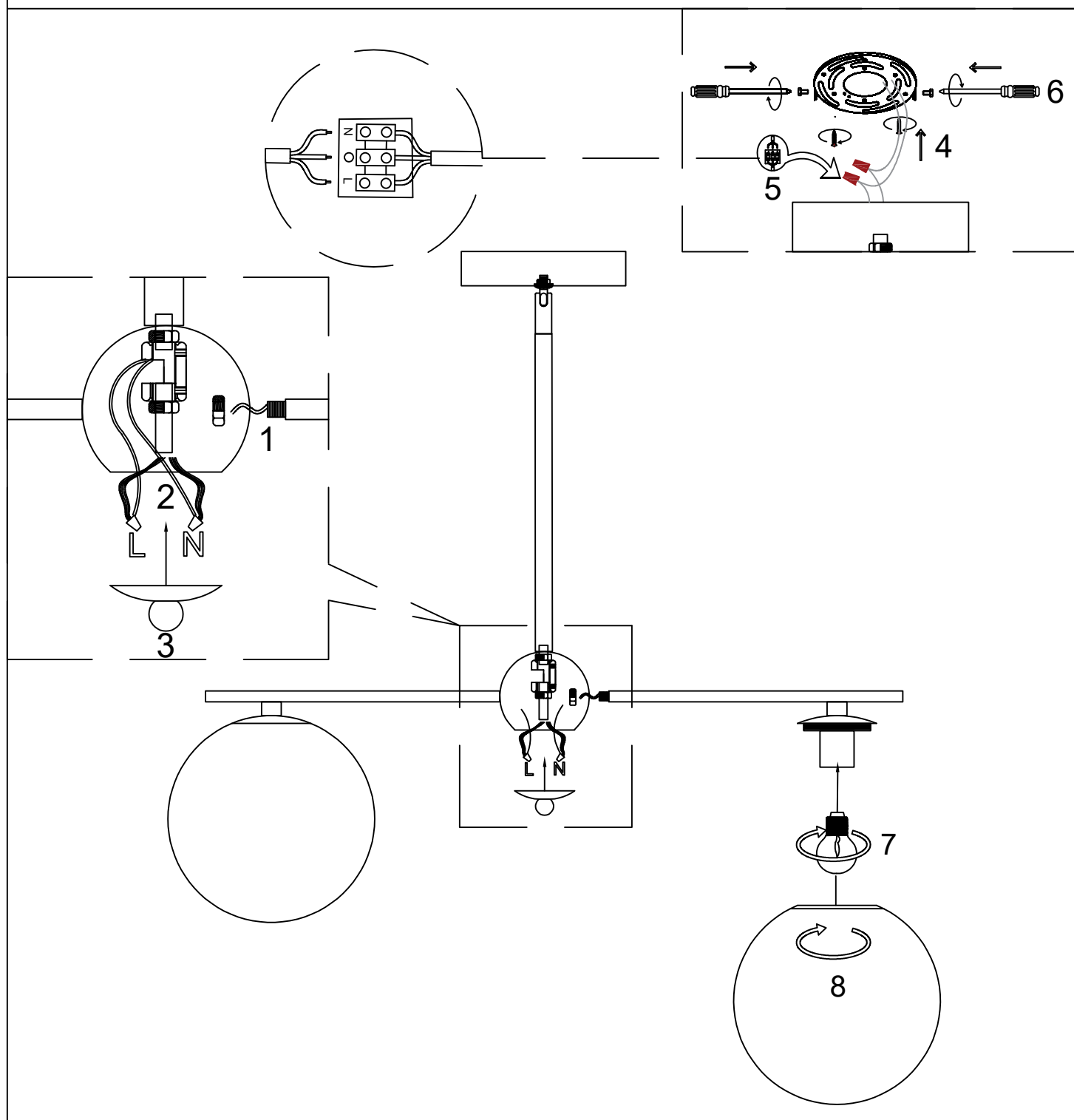
4:Fix the hanging board to the ceiling

5:Connect the lamp wires to the reserved wires

6:Fix the ceiling tray and hanging board from the side

7:Installing bulb

8:Align the vehicle parts and tighten the lampshade



1:Installing light arm

2:The power cord of the lamp arm is connected to the main line, L/N

3:Assembly of lamp body

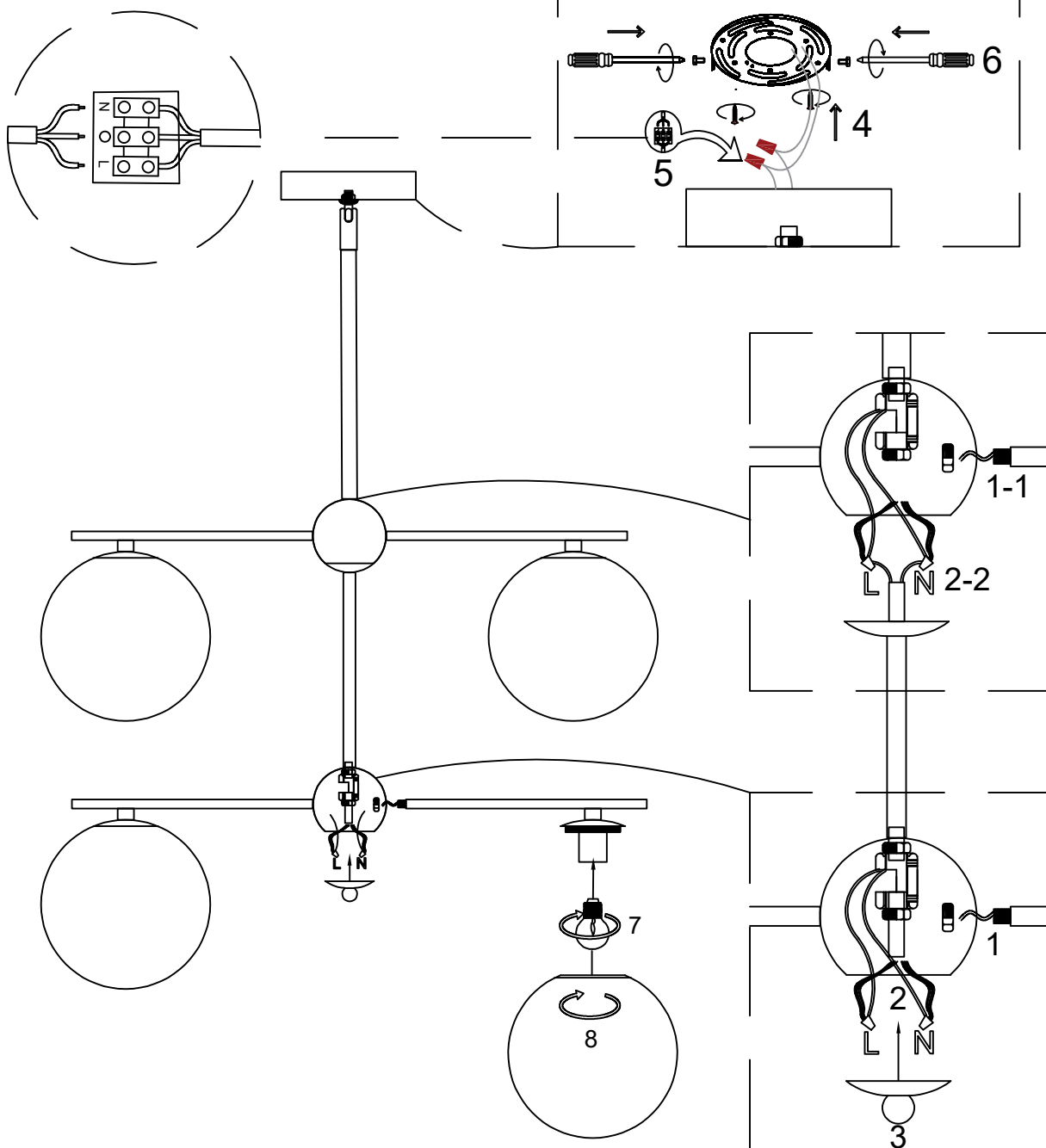
4:Fix the hanging board to the ceiling

5:Connect the lamp wires to the reserved wires

6:Fix the ceiling tray and hanging board from the side

7:Installing bulb

8:Align the vehicle parts and tighten the lampshade



1:Installing light arm

2:The power cord of the lamp arm is connected to the main line, L/N

3:Assembly of lamp body

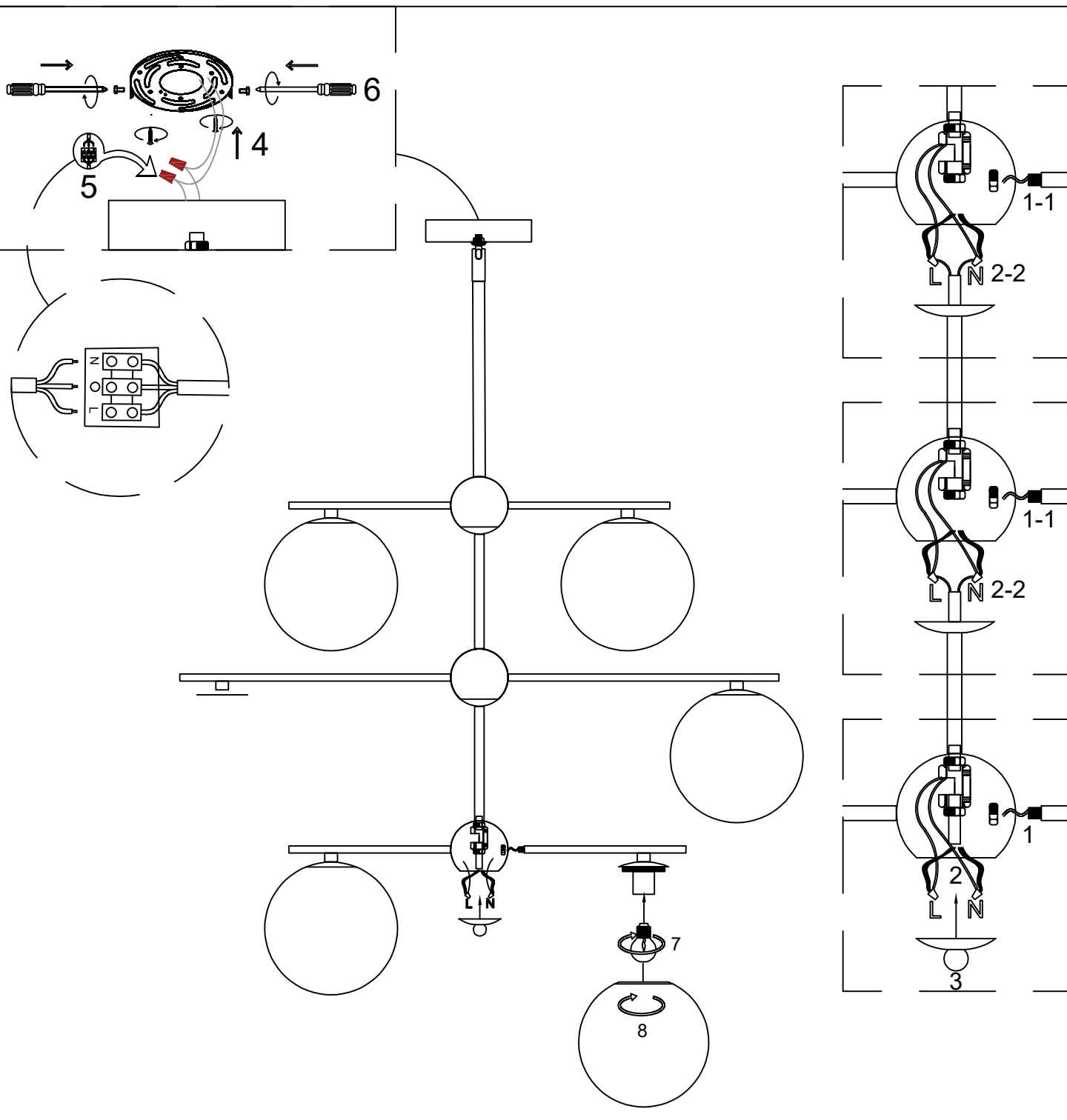
4:Fix the hanging board to the ceiling

5:Connect the lamp wires to the reserved wires

6:Fix the ceiling tray and hanging board from the side

7:Installing bulb

8:Align the vehicle parts and tighten the lampshade



1: Fix the hanging board to the ceiling

2: Connect the lamp wires to the reserved wires

3: Tighten the nut to secure the lamp body

4: Installing bulb

5: Align the vehicle parts and tighten the lampshade

